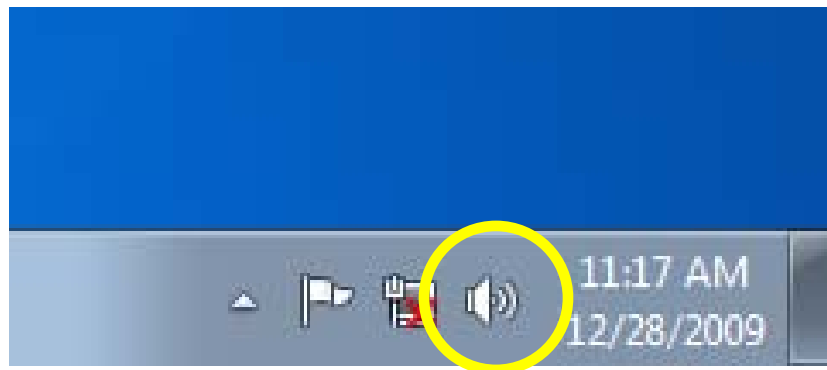




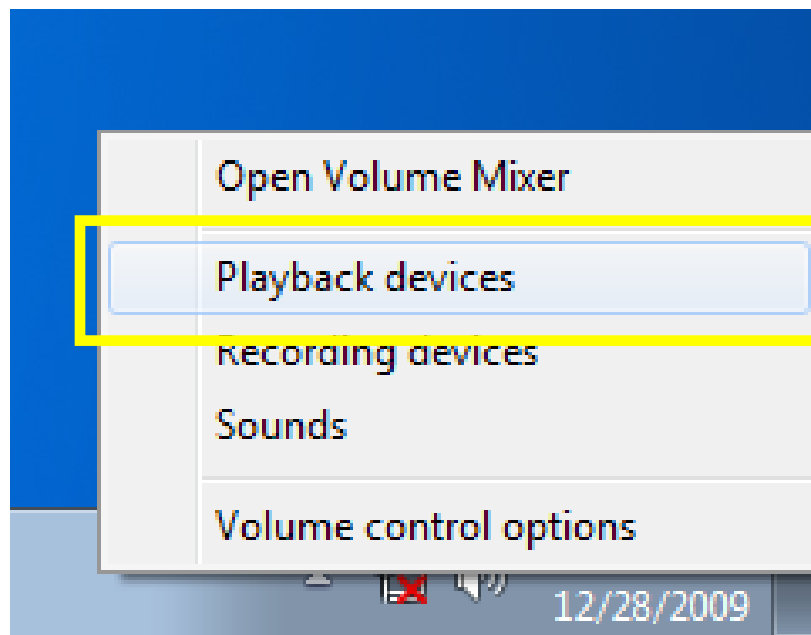
Audio Configuration Help

Windows 7 will only output sound through one device at a time. These instructions will help you choose which device.

Right-click on the small speaker icon in the lower right corner of the desktop



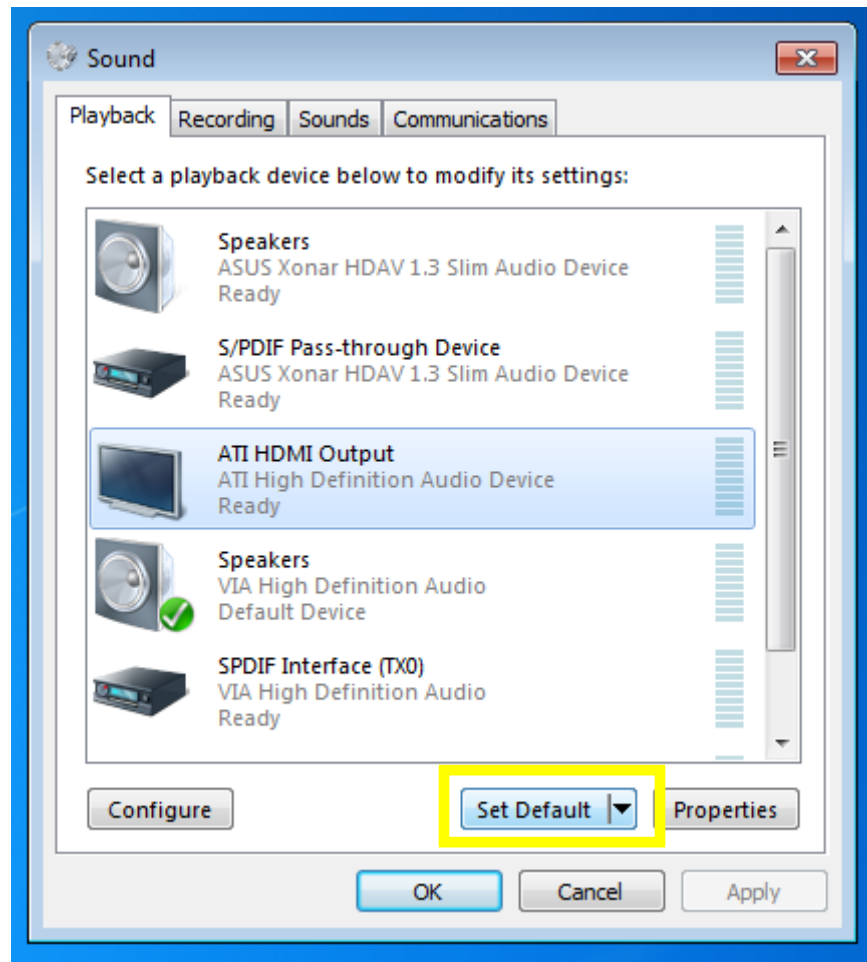
A menu will pop up. Select Playback devices



Audio Configuration Help

A menu will appear showing all of your playback devices (the list may be different depending on your system's hardware configuration)

Select the device you would like to have sound through and click on Set Default



For HDMI output through the Graphics card, select ATI HDMI Output. You must have the HDMI output connected and active in order to select it.

For Optical Output from the motherboard, select SPDIF Interface (VIA High Definition Audio)



Audio Configuration Help

For analog speaker output or headphones, select Speakers (VIA high Definition Audio)

If your system has a Xonar card included:

For HDMI or SPDIF optical/coax output, select S/PDIF Pass-through Device (ASUS Xonar HDAV 1.3 Slim Ausio Device)

Open the Asus utility to choose between HDMI and Optical/Coax. Please see your Xonar Manual.

For front panel headphone output, select Speakers (ASUS Xonar HDAV 1.3 Slim Ausio Device)

Please contact us if you need further help or information:

Website: <http://www.ninx.com>
Toll-Free: (888) 336-5464
Email: support@ninx.com
Address: NinX, LLC
P.O. Box 332
Mount Vernon, WA 98273