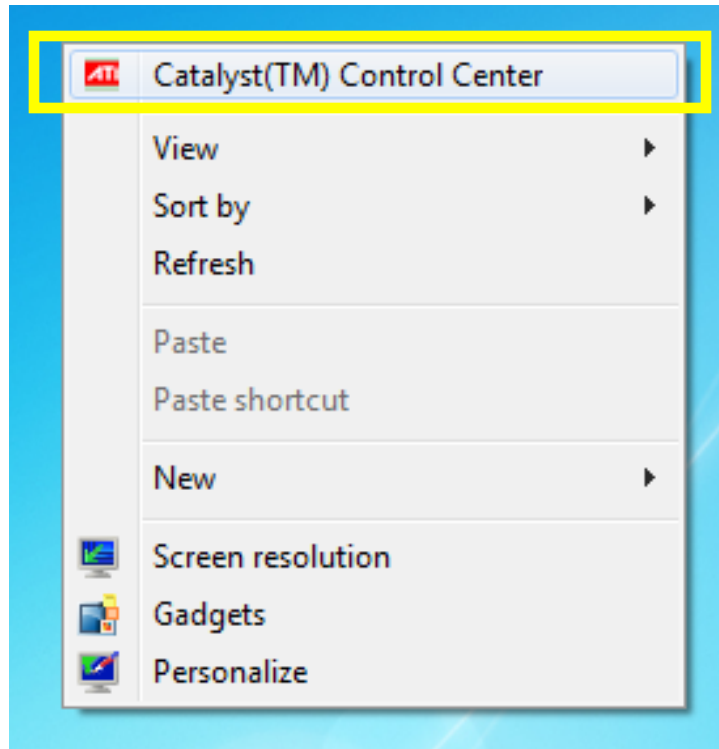




Video Configuration Help

The display resolution on HDTV's from various manufacturers can differ slightly. If your NinX Desktop does not fill the screen correctly, here is how to remedy it

Right-click in a blank portion of the desktop. A menu will appear. Select Catalyst™ Control Center.

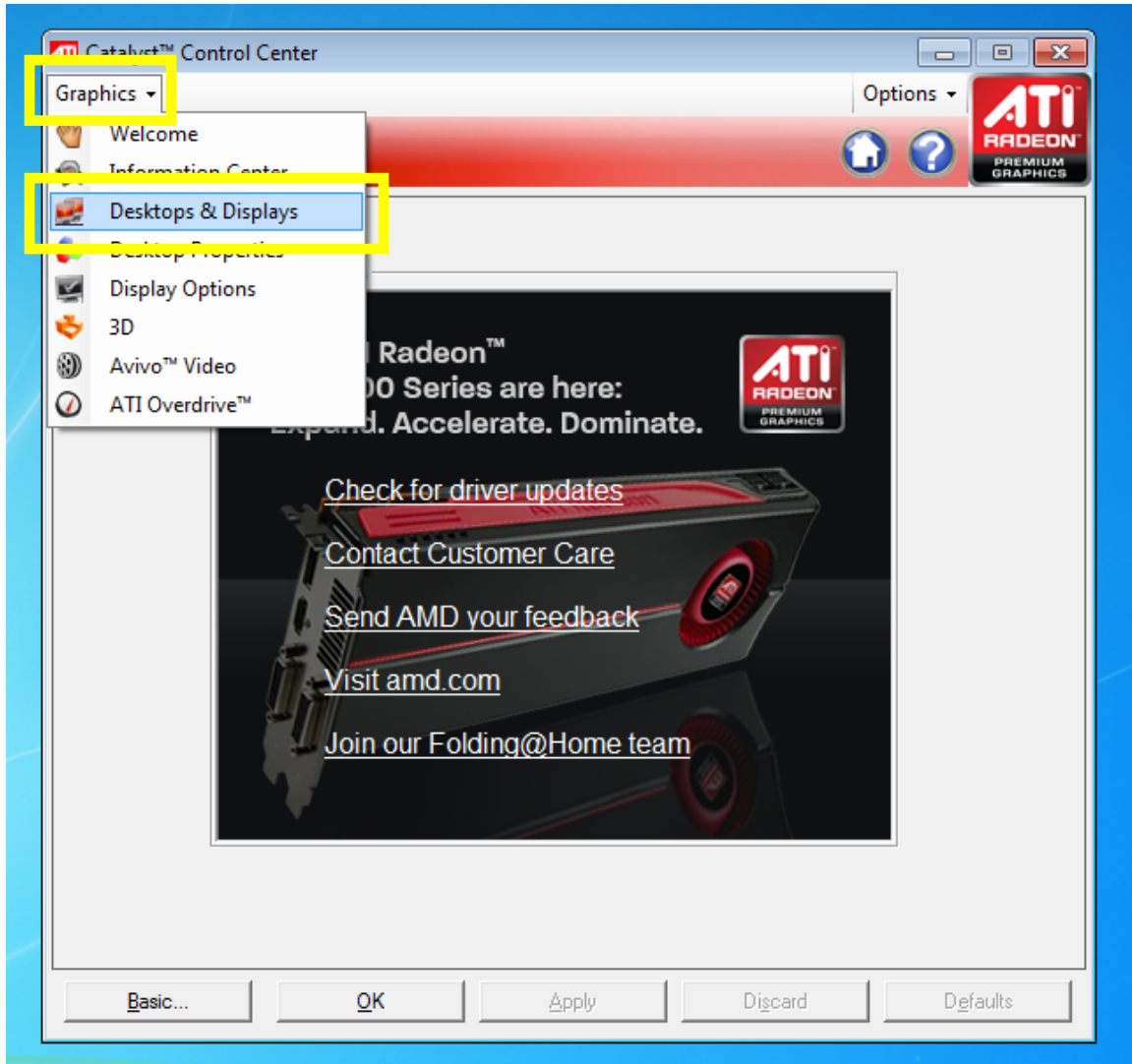


Video Configuration Help

Wait for the Catalyst Control Center to load.

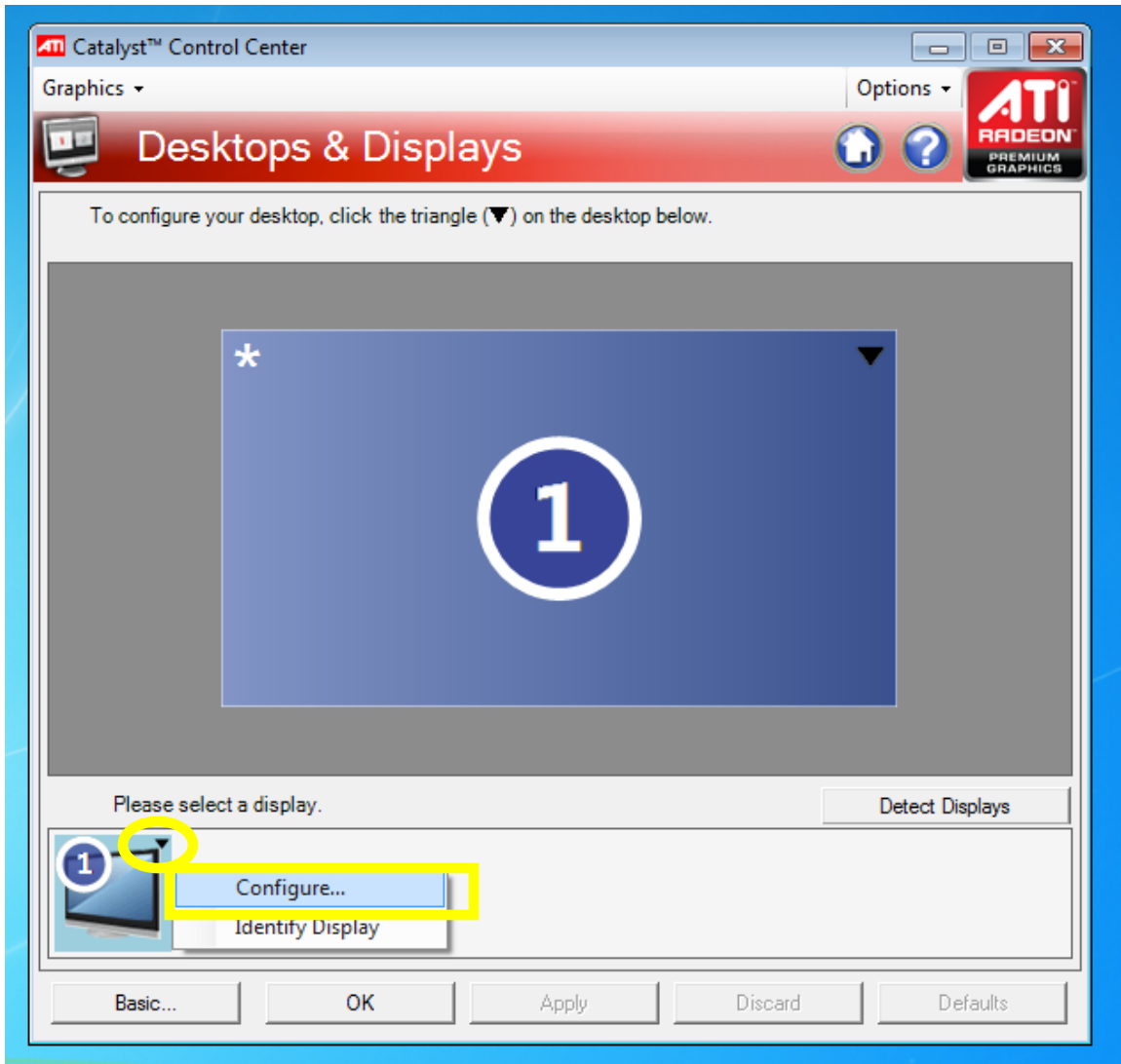
Click on Graphics

Click on Desktops & Displays



Video Configuration Help

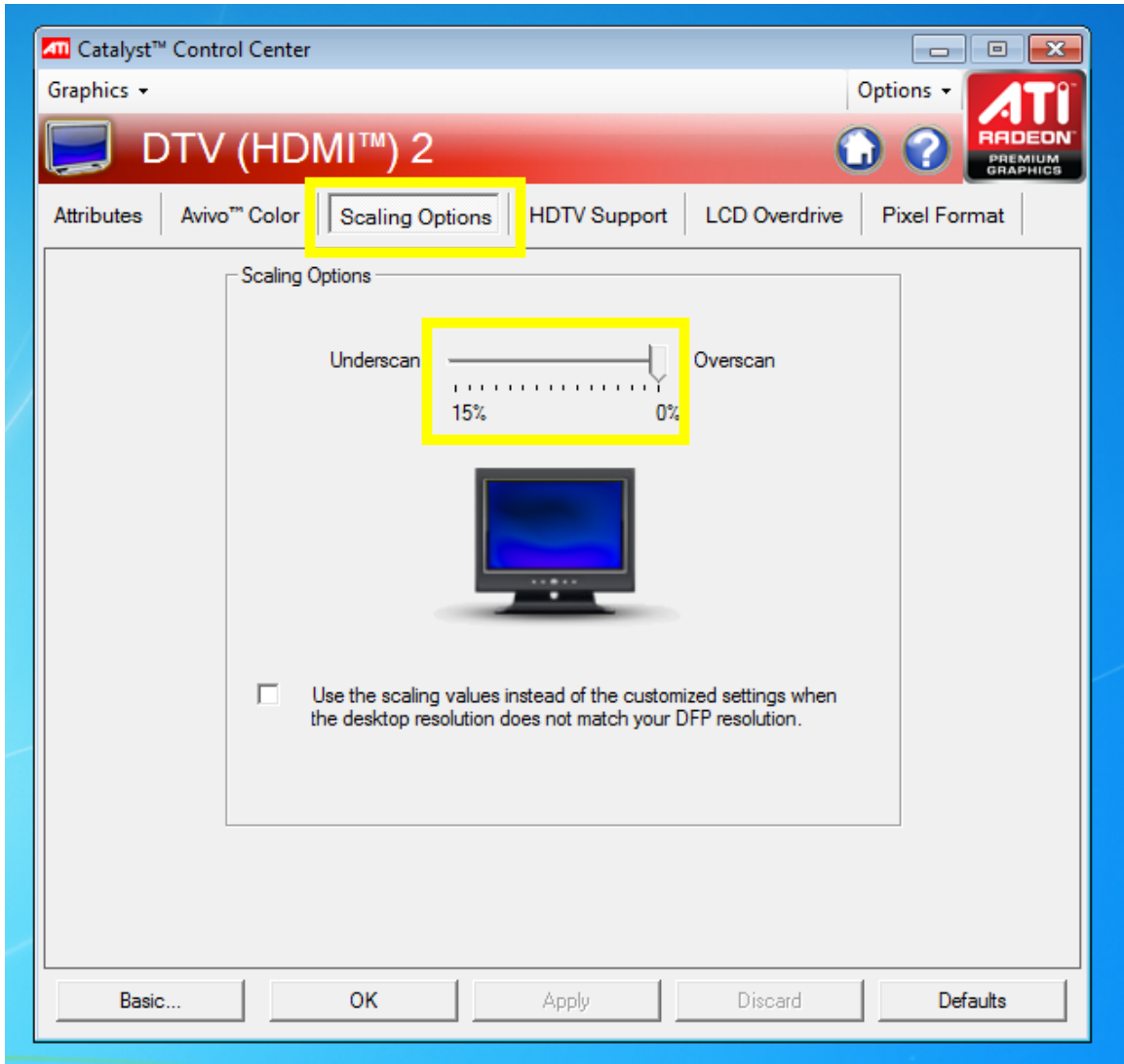
The resulting screen shows you all of your displays.
Find your Display in the lower left portion of this screen
Right-click on the small black Triangle
Select Configure





Video Configuration Help

On the resulting screen, select the tab labeled Scaling Options. Adjust the slider until the Display fills your TV correctly. Select OK and your display is adjusted.



Please contact us if you need further help or information:

Website: <http://www.ninx.com>

Toll-Free: (888) 336-5464

Email: support@ninx.com

Address: NinX, LLC
P.O. Box 332
Mount Vernon, WA 98273